



Overview:

This variable height model features electric or hydraulic height operation with the additional benefit of manually adjustable backrest and foot section angles for patient positioning and comfort. The chair is supplied with a pair of height and angle adjustable armrests for blood taking procedures and the backrest can be instantly lowered to -15° head down to aid patient recovery in the event of fainting or light-headedness.



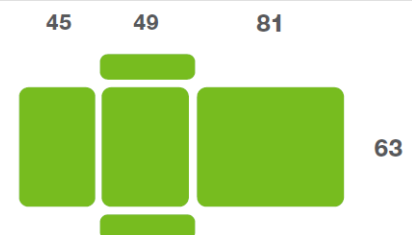
Benefits

- Lifetime frame & 5 year parts guarantee - see website for further details
- Choice of hydraulic or electric height operation
- Adjustable angle backrest for supporting the patient in the sitting position
- The backrest can be instantly lowered to -15° to aid patient recovery
- The foot section is adjustable from 0° to -90° for ease of patient access
- Safe working load and lifting capacity of 250kg (550lb / 39 stone)
- Multi-adjustable phlebotomy armrest located on both sides of the chair
- Retractable wheels provide easy movement and positioning of the chair
- Low patient transfer height of 52cm (20")
- Wide choice of options, width and accessories to meet your requirements

Overall Dimensions

Length: 177cm (70") approx
 Width: 63cm (25") approx
 Height: 52cm - 101cm approx
 (20" - 40") approx

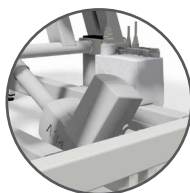
Upholstery Dimensions



Options & Accessories:



Motorised Backrest



Battery Back-up



D Cushion



Phlebotomists Chair



Foot Switch
Operation



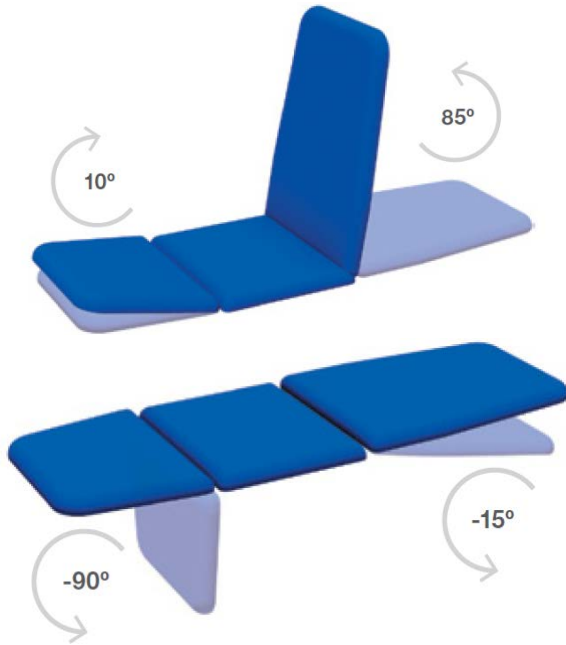
Paper Roll Holder

NHS Approved Supplier



t: +44 (0)1449 767887
 e: sales@plinthmedical.com
 www.plinthmedical.com

Operational Parameters



Model 93BE - Electric Version

Model 93BH - Hydraulic Version

Standard Features

- Designed and manufactured in the UK
- Lifetime frame & 5 year parts guarantee
- 16 year average lifespan
- Electric or hydraulic operation
- Comfort foam
- Easy operation
- Low running costs
- Hardwearing anti-microbial vinyl
- Safe working load 250kg
- Retractable castors
- Phlebotomy arm rests
- Hoist clearance 130mm

Technical Standards

- IP Rating - IPx4
- EEC Classification - MDD93/42/EEC Annex IX Class 1
- Electrical Standard - IEC601 Part 1 + 60601 P (EN)
- Vinyl Flame Retardant to CRIB 5 (BS 7176)
- Foam to BS 5852: Part 2: 1982, Ignition Source 5 [CRIB 5]
- CE Marked
- Externally audited to ISO9001:2015 by LRQA

Delivery Promise

- Delivery to UK mainland in just 7-10 working days
- Faster service may be available if required
- Overseas delivery 7-10 days plus shipping time

Upholstery Vinyl

- Flame retardant to BS 5852 Ignition Source 5 - CRIB 5 (BS 7176) Medium Hazard
- Independently tested to verify effectiveness at reducing the spread of MRSA, E.coli & other similar bacteria & fungi
- Rated at 500,000 Martindale rubs without damaging or marking the top layer, making it suitable for all high-traffic, heavy-duty areas
- Phthalate free
- Please note: If the upholstery colour is not specified, 'Almond' will be supplied



Jasmine



Battleship



Cobalt



Cocoa



Grape



Mulled Wine



Pillarbox



Gingersnap



Candy



Applemint



Sapphire



Atlantic Blue



Lupin



Denim



Cool Blue



Rainforest



Wasabi



Citrus Green



Marigold



Almond

Plinth Medical Ltd
Barric Lane
Occold, Eye
Suffolk, United Kingdom
IP23 7PX

t: +44 (0)1449767887
e: sales@plinthmedical.com
www.plinthmedical.com

Plinth | Medical